

# METRIT CHEMICALS PVT. LTD.

## EFFLUENT TREATMENT PLANT (ETP)

### Effluent Treatment Plant Key Features & Benefits/Advantage:

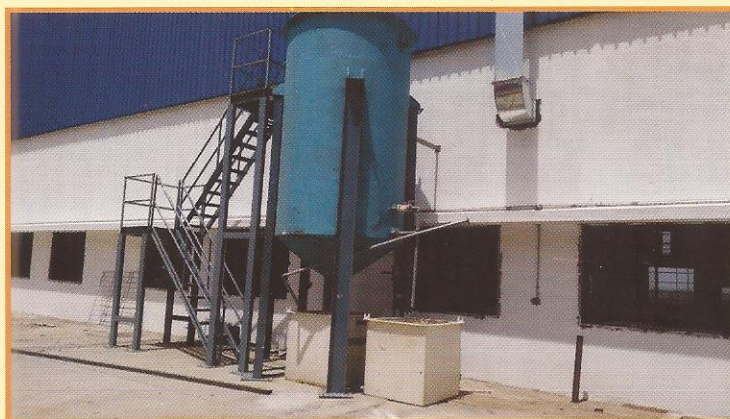
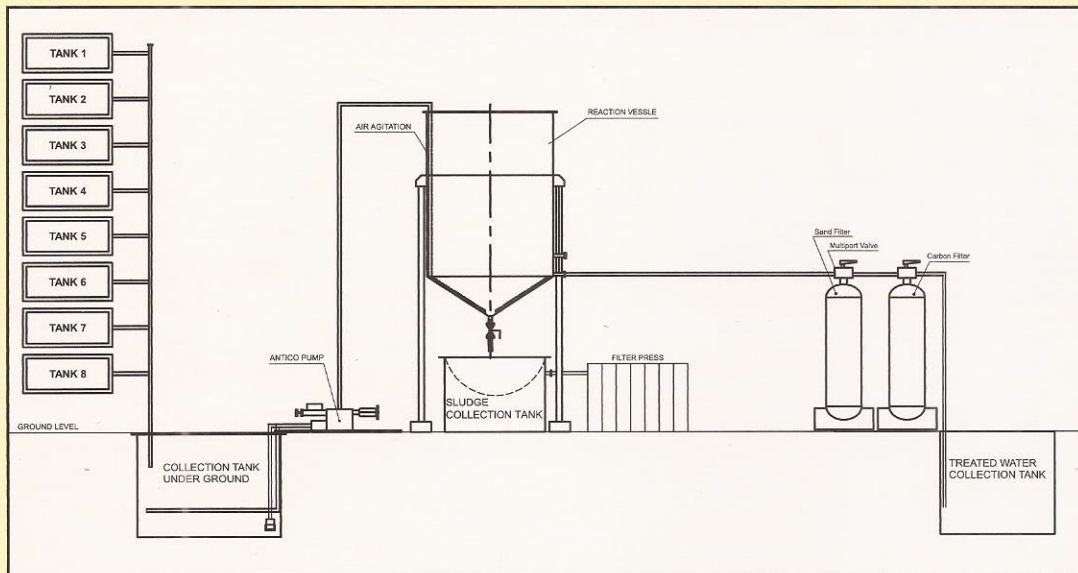
1. Low Cost
2. Fully Customized Designed System
3. Low Operation & Maintenance Cost
4. Operator Friendly
5. Technology meets to Pollution Control Board.

### Technologies used for effluent treatment process:

Collection Tank  
Neutralization  
Chemical mixing in reaction vessel with air agitation  
Filtration  
Discharge to Drain (For gardening proposes)

### Effluent treatment plant highlights:

1. Purifying effluent by removing solid contents like rags, grit and grease etc. that may cause damage to equipment or create operational problems.
2. Removal of floating and settled materials, i.e. suspended solids and organic matter.
3. Treatment in reaction vessel with air agitation.
4. Removing heavy metals in reaction vessel
5. Separate collection of sludge, clear liquid & pass it through filters
6. Easy processes like effluent filtration, neutralization, sludge and solid removal etc., give complete ETP solution for industries like electroplating, Anodizing, Chromotizing, Phosphating & pickling chemical and many more...



**ACTUAL PHOTO  
ETP  
OF EMINENCE  
PUNE**

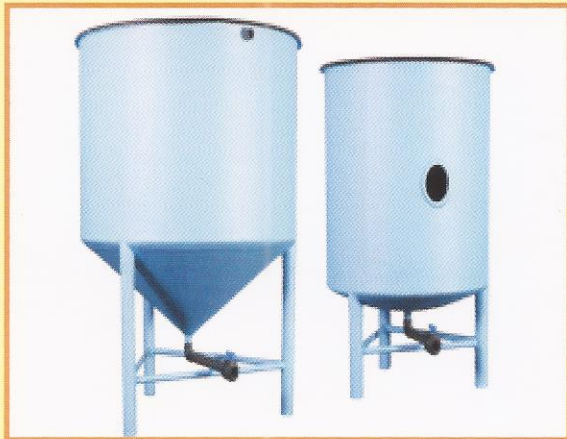




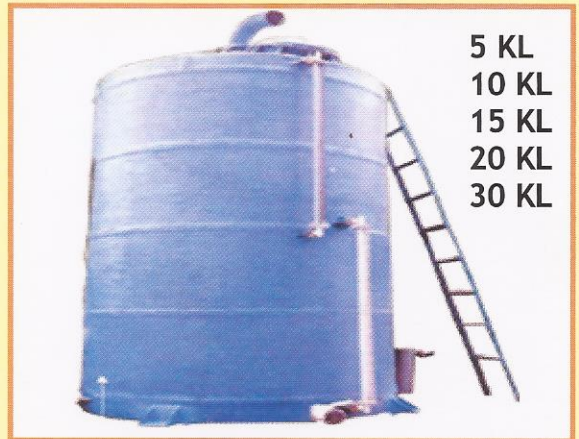
**POLYPROPYLENE TANK**



**FRP FUME SCRUBBER**

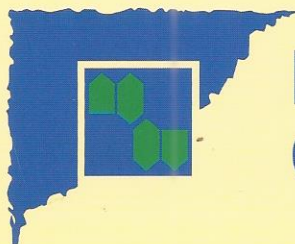
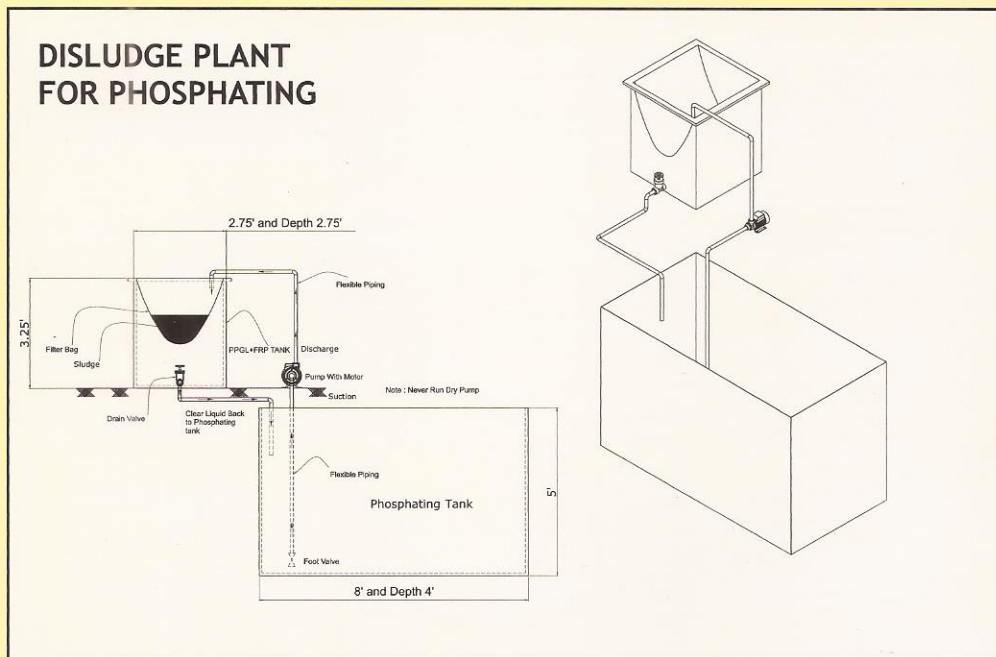


**FRP CONICAL TANK**



5 KL  
10 KL  
15 KL  
20 KL  
30 KL

**FRP CHEMICAL STORAGE TANK**



**METRIT  
CHEMICALS PVT. LTD.**

**METAL TREATMENT CHEMICAL & PLANTS / PAINT REMOVERS**

19, Keytuo Industrial Estate, 220, Kondivita Village Road, M.I.D.C., Andheri (East), Mumbai - 400 059.

Tel.: 91-22-2836 5115 / 3088 8444 Fax : 91-22- 2821 9233

E-mail : metrite@rediffmail.com / metritechemicals@gmail.com